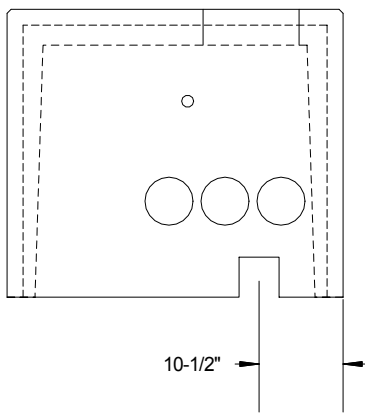
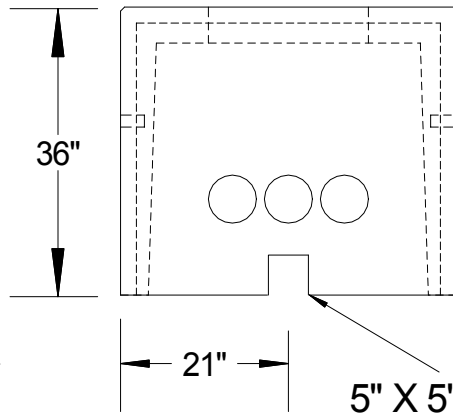


Top View

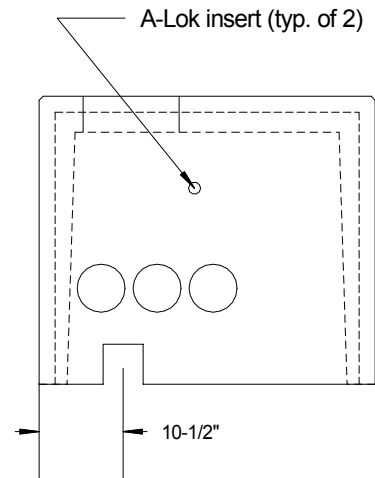


Left Side View

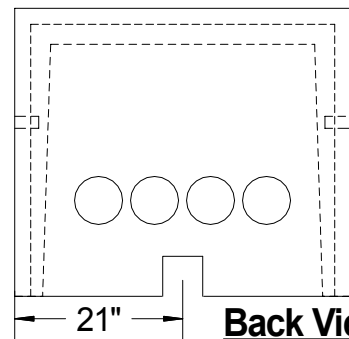


Front View

5" X 5" slot
all four sides



Right Side View



Back View

801 Transformer vault

Model no. EV801 (NYSEG no. 262-801-00)

Specifications

Concrete: 5000 psi @ 28 days

Reinforcement: 4 x 4 x 4 gauge welded wire fabric

5-6% air entrainment

Walls taper from 3 1/2" to 4 1/2", top is 4 1/2" thick

1/2" chamfer on all edges except bottom of structure and 5" x 5" slots

Approximate weight: 2440 lbs.

www.concretebuildingsupply.com

Concrete Building Supply Co.

Northeast Concrete Products, Inc.

(P) (518) 563-0700 (F) (518) 563-1392 1024 Military Turnpike,
Plattsburgh, New York 12901

SCALE- 1/2" = 1'

DRAWN BY- R. E. S.