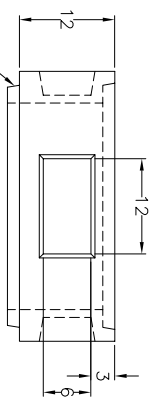
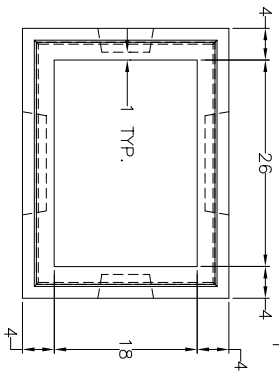
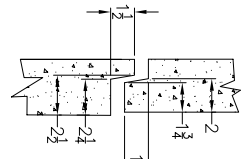
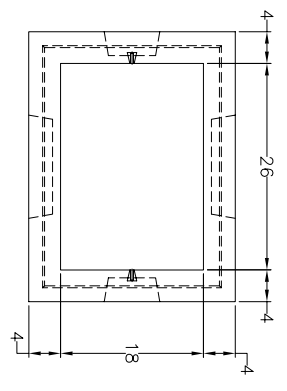
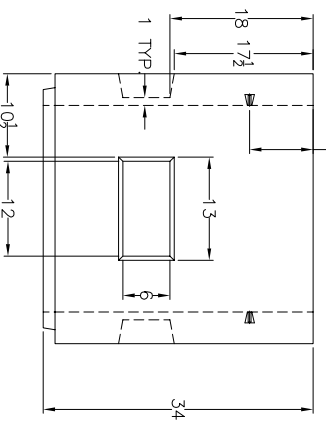


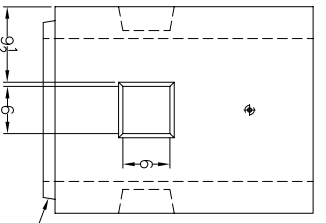
DATE	REV	DESCRIPTION	DATE	APPROVED



PRECAST EXTENSION FOR RECTANGULAR PULLBOX
REINFORCEMENT: 6-6-10 GAUGE MESH



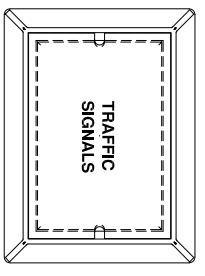
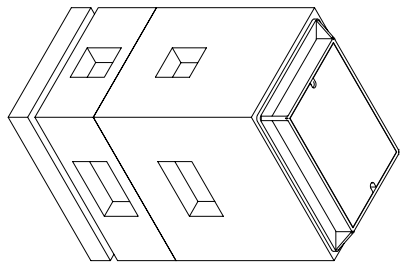
PRECAST RECTANGULAR REINFORCED
CONCRETE PULLBOX
REINFORCEMENT: 6-6-10 GAUGE MESH



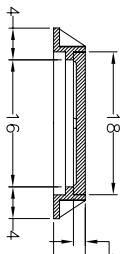
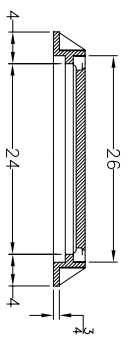
SEE JOINT DETAIL

5000 PSI CONCRETE @ 28 DAYS 5% AIR ENTRAINMENT
REINFORCEMENT 6 X 6 10 GAUGE MESH
TO BE PLACED WITHIN THE CENTER THIRD OF THE WALL
MINIMUM COVERAGE 3/4"

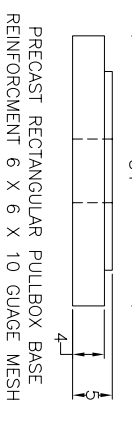
WEIGHTS:
PULL BOX - 1,125 Lbs.
BASE SLAB - 312 Lbs.
EXTENSION - 361 Lbs.



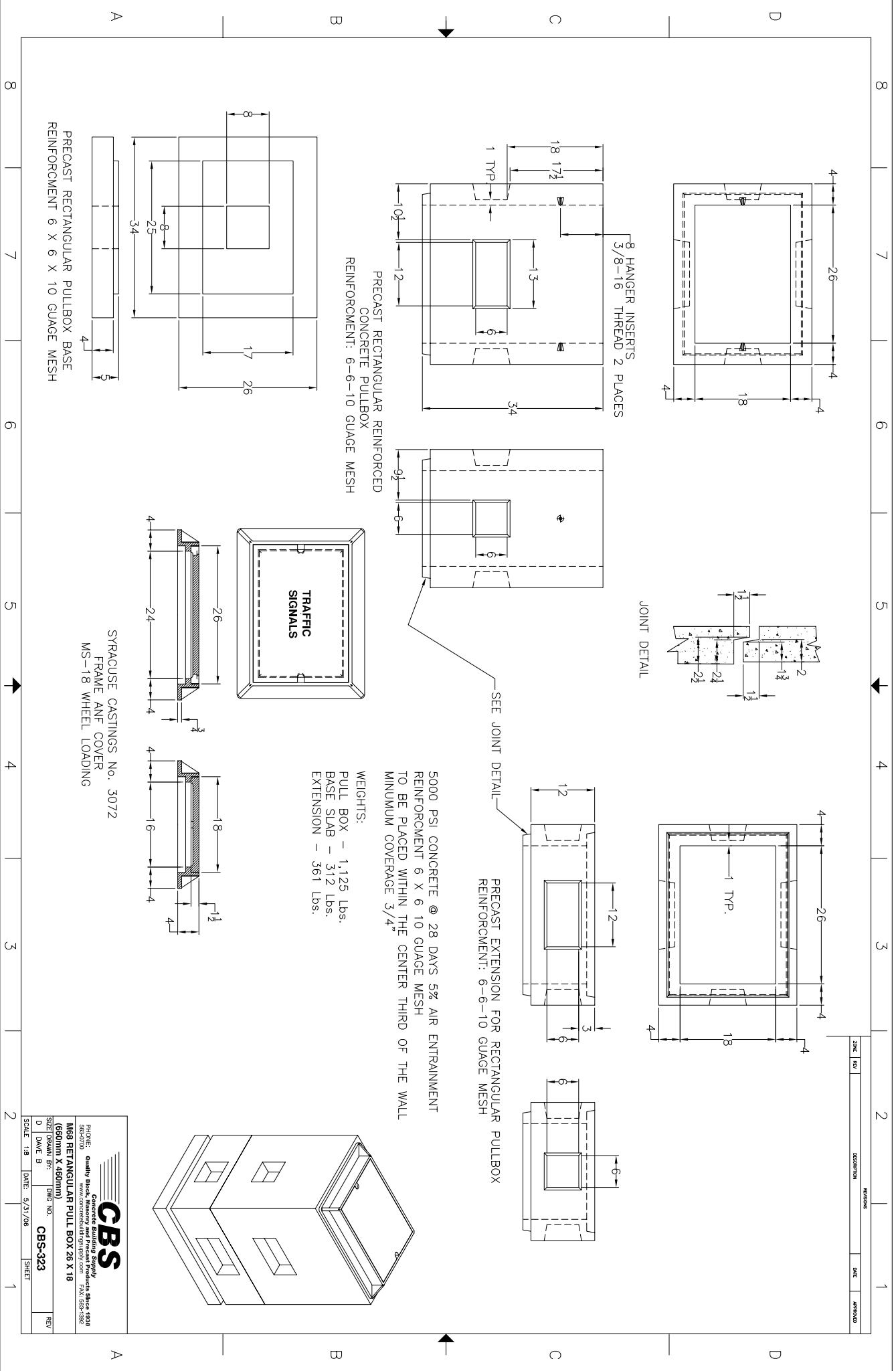
TRAFFIC
SIGNALS



SYRACUSE CASTINGS No. 3072
FRAME AND COVER
MS-18 WHEEL LOADING



PRECAST RECTANGULAR PULLBOX BASE
REINFORCEMENT 6 X 6 X 10 GAUGE MESH



CBS
Concrete Building Supply
1838
S. GARDNER ST.
ANN ARBOR, MI 48106
PHONE: (800) 443-3333
FAX: (313) 963-9922

1869 RECTANGULAR PULL BOX 26 X 18
(600MM X 460MM)
SEE DRAWING FOR PART NO.
DATE: 5/31/08 SHEET