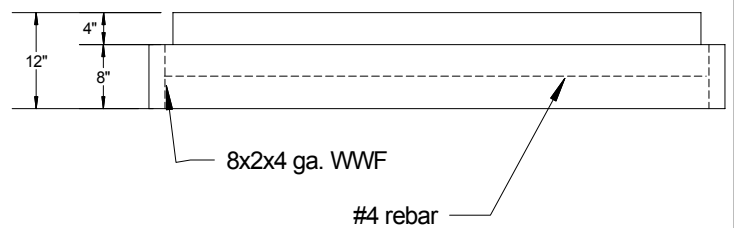
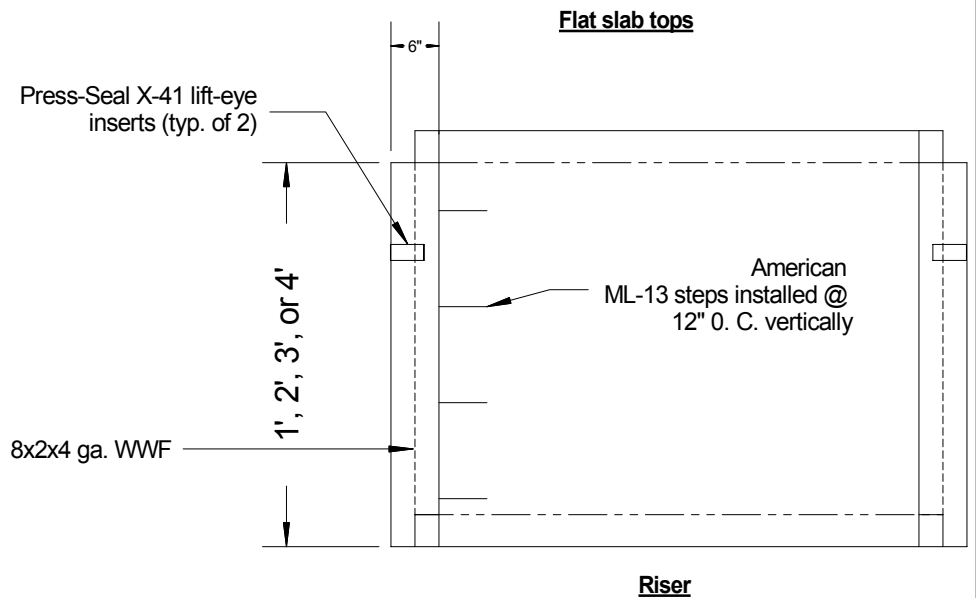
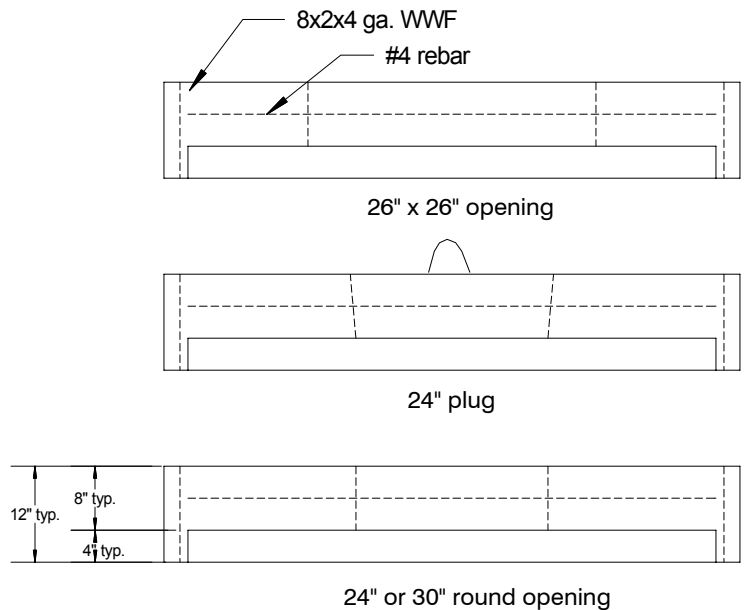


Isometric view - not to scale



## 5' I. D. manhole

### Specifications:

Concrete: 5000 psi min., 5-6% air

### Reinforcement:

Walls: 8x2x4 gauge WWF to equal .12 sq. in. / V. F. min.

Floor and top slabs: #4 rebar @ 6" O. C. both ways

Conforms to ASTM C-478 and A. A. S. H. T. O.

HS-20 standards

Sealant: 1" ConSeal CS-101 mastic rope sealant on all joints

### Weights (lbs.):

Base slab - 4594 Risers: 4' - 5183 3' - 3888 2' - 2592 1' - 1269 Flat slab tops: approximately 2739

Volumes (gal.): 4' riser - 588 3' riser - 441 2' riser - 294 1' riser - 147

### Base slab:

[www.concretebuildingsupply.com](http://www.concretebuildingsupply.com)

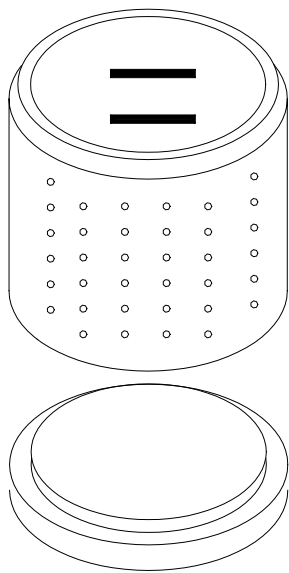
## Concrete Building Supply Co.

Northeast Concrete Products, Inc.

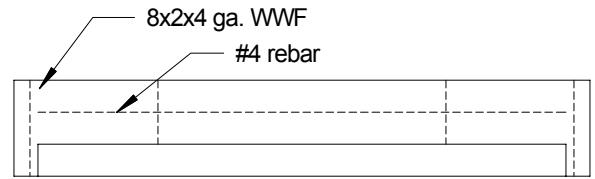
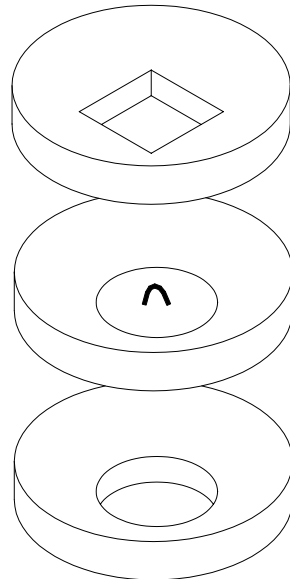
(P) (518) 563-0700 (F) (518) 563-1392 1024 Military Turnpike,  
Plattsburgh, New York 12901

SCALE- 1/2" = 1'

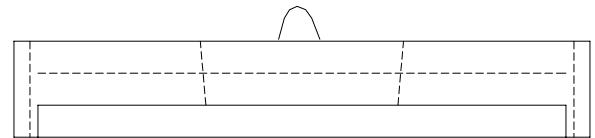
DRAWN BY- R. E. S.



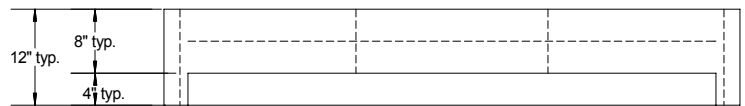
Isometric view - not to scale



26" x 26" opening

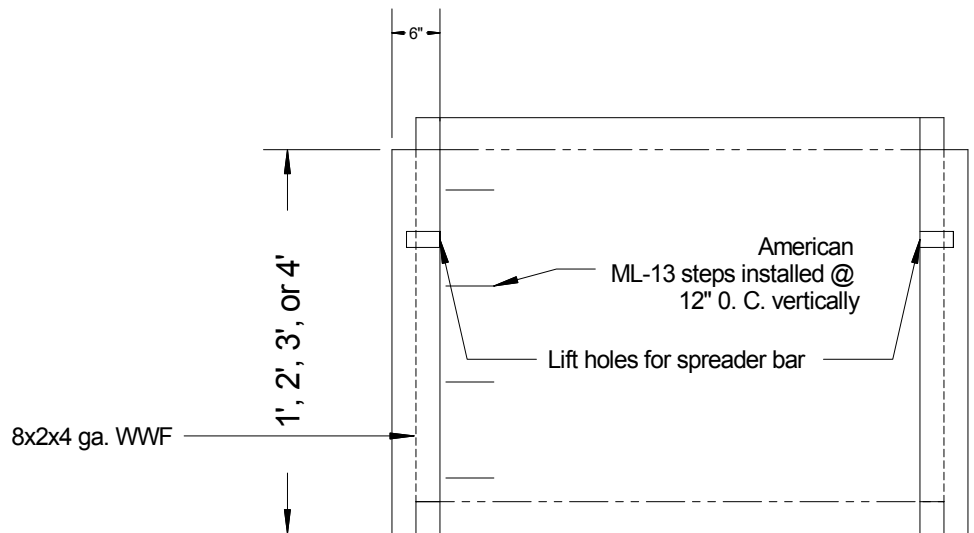


24" plug

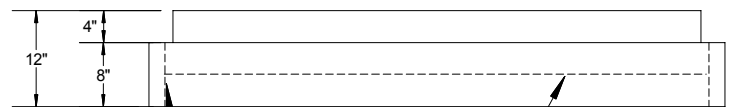


24" or 30" opening

**Flat slab tops**



**Riser**



**Base slab:**

## 5' I. D. perforated manhole

**Specifications:**

Concrete: 5000 psi min., 5-6% air

**Reinforcement:**

Walls: 8x2x4 gauge WWF to equal .12 sq. in. / V. F. min.

Floor and top slabs: #4 rebar @ 6" O. C. both ways

Conforms to ASTM C-478 standards

Perforations are 2 1/4" in diameter

Sealant: 1" ConSeal CS-101 mastic rope sealant on all joints

**Weights (lbs.):**

Base slab - 4594 Risers: 4' - 5183 3' - 3888 2' - 2592 1' - 1269 Flat slab tops: approximately 2739

**Volumes (gal.):** 4' riser - 588 3' riser - 441 2' riser - 294 1' riser - 147

[www.concretebuildingsupply.com](http://www.concretebuildingsupply.com)

### Concrete Building Supply Co.

Northeast Concrete Products, Inc.

(P) (518) 563-0700 (F) (518) 563-1392 1024 Military Turnpike,  
Plattsburgh, New York 12901

SCALE- 1/2" = 1'

DRAWN BY- R. E. S.