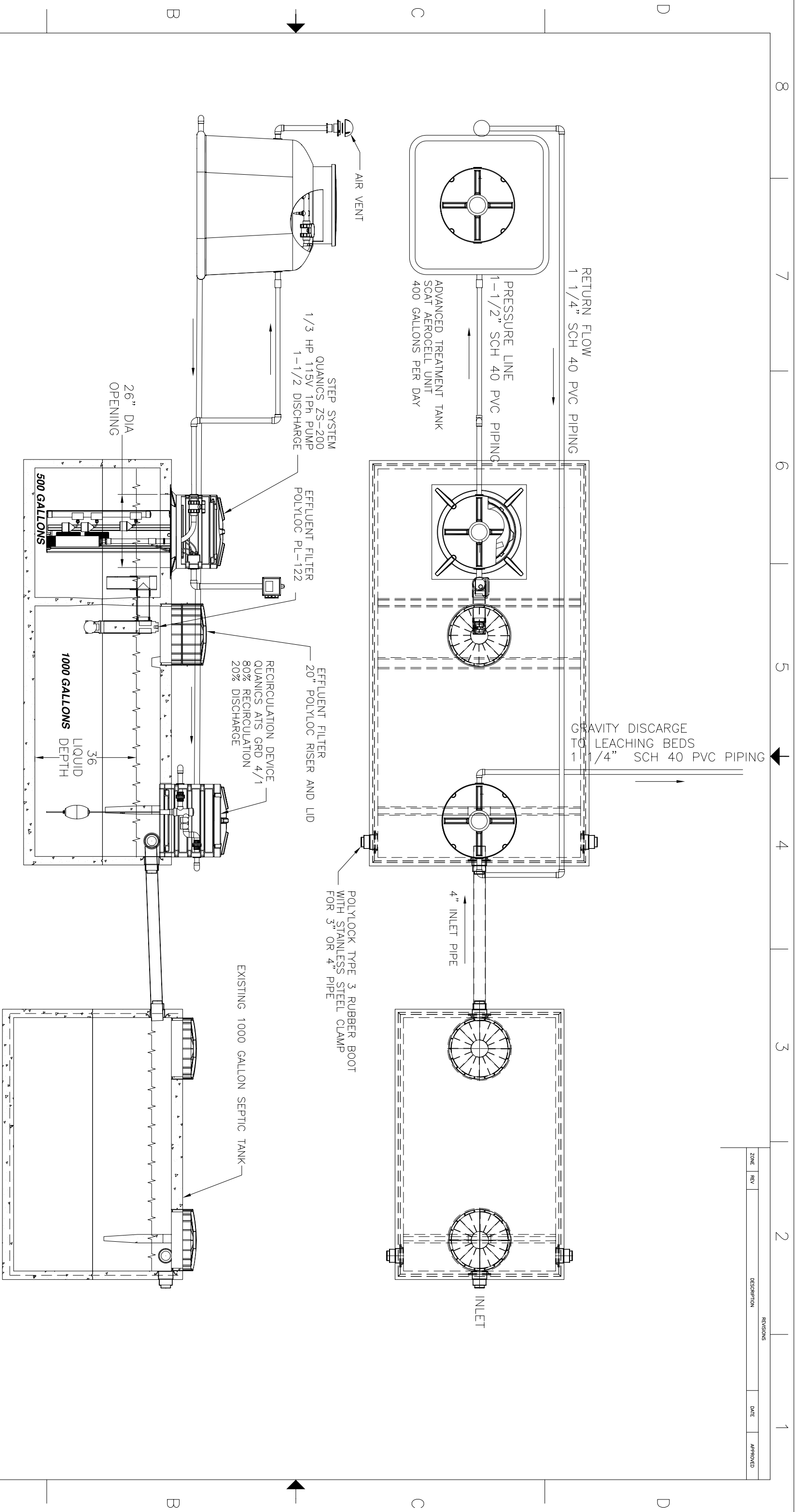


ZONE	REV	DESCRIPTION	DATE	APPROVED



1500 GALLON DUAL COMPARTMENT TANK
 CONCRETE: 5000 PSI @ 28 DAYS 5 %-6% AIR
 (MODERATE SULFATE RESISTANCE)
 REINFORCEMENT: 6" X 6" GUAGE MESH AND (5) #3 REBAR WRAPS AROUND TANK
 CONSTRUCTION JOINT - SEALED WITH CONSAL CS-101 MASTIC
 PIPE PENETRATIONS - POLYLOCK TYPE 3 RUBBER BOOT WITH STAINLESS CLAMP
 TANK IS VACUUM TESTED TO 5" MERCURY FOR 2 MINUETS
 4" THICK TOP AND FLOOR 3" THICK WALLS
 WEIGHTS: TOTAL 12,740 Lbs. - TOP 5,567 Lbs. - BASE 7,173 Lbs
JOB SITE ASSEMBLY REQUIRED

CBS
 Concrete Building Supply
 Quality Block, Masonry and Precast Products Since 1938
 563-0700 www.concretebuildingsupply.com FAX: 563-1392

1500 GALLON WASTEWATER TREATMENT SYSTEM
 SEE CUSTOM HOLES
 SIZE DRAWN BY: DWG NO. CBS-422
 D DAVE REV

SCALE 1:20 DATE: 08/24/07 SHEET 1 OF 1